

Vascular Plants of Middle Piru Creek by David L. Magney

Scientific Name	Common Name	Habit	Wetland Indicator		Family	Ventura Co.			
			Status			Abundance Status	# Pops.	Upper Middle	Lower Middle
<i>Acmispon glaber</i> (Vogel) Brouillet var. <i>glaber</i>	Deerweed, California Broom	PH	.		Fabaceae	C	5	3	2
<i>Acmispon strigosus</i> (Nuttall) Brouillet var. <i>strigosus</i>	Strigose Lotus or Hosackia	AH	.		Fabaceae	C	1	1	
<i>Agoseris retrorsa</i> (Bentham) E. Greene	Spear-leaved Mountain Dandelion	PH	.		Asteraceae	C	1		1
<i>Allophyllum gilioides</i> (Bentham) A.D. Grant & V. Grant ssp. <i>gilioides</i>	Stragglng Gilia	AH	FAC		Polemoniaceae	U	0	?	
<i>Alnus rhombifolia</i> Nuttall	White Alder	T	FACW		Betulaceae	C	2	2	
<i>Amorpha californica</i> Nuttall var. <i>californica</i>	California False Indigo	S	FAC		Fabaceae	C	3	2	1
<i>Apium graveolens</i> L. *	Celery	PH	(FACW)		Apiaceae	O	1	1	
<i>Arctostaphylos glauca</i> Lindley	Bigberry Manzanita	S	.		Ericaceae	C	5	2	3
<i>Artemisia californica</i> Less.	California Sagebrush	S	.		Asteraceae	C	4	4	
<i>Artemisia douglasiana</i> Besser	Mugwort	PH	FAC		Asteraceae	C	7	7	
<i>Artemisia dracunculus</i> L.	Tarragon, Dragon Tarragon	PH	(FACW)		Asteraceae	C	1	1	
<i>Artemisia tridentata</i> Nuttall ssp. <i>tridentata</i>	Great Basin Sagebrush	S	.		Asteraceae	C	3	2	1
<i>Artemisia tridentata</i> ssp. <i>parishii</i> (Gray) H.M. Hall & Clements	Parish Great Basin Sagebrush	S	.		Asteraceae	U	1		1
<i>Asclepias californica</i> E. Greene ssp. <i>californica</i>	California Milkweed	AH	.		Apocynaceae	C	3	1	2
<i>Asclepias fascicularis</i> Decne.	Narrowleaf Milkweed	PH	FAC		Apocynaceae	C	1	1	
<i>Astragalus didymocarpus</i> var. <i>obispoensis</i> (Rydb.) Jeps.	San Luis Obispo Two-seeded Milkvetch	AH	.		Fabaceae	R	1	1	
<i>Atriplex canescens</i> (Pursh) Nuttall var. <i>canescens</i>	Fourwing or Hoary Saltbush	S	(FACU)		Chenopodiaceae	O	1	1	
<i>Baccharis pilularis</i> ssp. <i>consanguinea</i> (DC.) C.G. Wolf	Coyote Brush	S	(FACU)		Asteraceae	C	1	1	
<i>Baccharis salicifolia</i> (Ruiz Lopez & Pavon) Pers. ssp. <i>salicifolia</i>	Mulefat, Seep-willow, Water-wally	S	FAC		Asteraceae	C	4	4	
<i>Bahiopsis laciniata</i> (A. Gray) E.E. Schill.	San Diego County Viguiera	S	.		Asteraceae	R	1		1
<i>Balsamorhiza deltoidea</i> Nuttall	Balsamroot, Chuchupate	PH	.		Asteraceae	C	1		1
<i>Berula erecta</i> (Huds.) Coville	Cutleaf Water-parsnip	PH	OBL		Apiaceae	U	1	1	
<i>Boechera arcuata</i> (Nutt.) Windham & Al-Shehbaz	Few-flowered Rock Cress	PH	.		Brassicaceae	C	1		1
<i>Boechera californica</i> (Rollins) Windham & Al-Shehbaz	California Rockcress	PH	.		Brassicaceae	U	1	1	
<i>Boechera pulchra</i> (M.E. Jones ex S. Watson) W.A. Weber	Desert Rock Cress	PH	.		Brassicaceae	C	1	1	
<i>Boechera sparsiflora</i> (Nutt.) Dorn	Few-flowered Rock Cress	PH	.		Brassicaceae	C	2	1	1
<i>Bolboschoenus maritimus</i> var. <i>paludosus</i> (A. Nelson) T. Koyama	Saltmarsh Bulrush	PG	OBL		Cyperaceae	O	1	1	
<i>Brickellia longifolia</i> var. <i>multiflora</i> (Kellogg) Cronquist	Gum-leaved Brickellbush	S	.		Asteraceae	R	2	1	1
<i>Brickellia nevinii</i> Gray	Nevin Brickellbush	S	.		Asteraceae	C	1	1	
<i>Bromus diandrus</i> Roth. ssp. <i>diandrus</i> *	Ripgut Grass	AG	(FACU)		Poaceae	C	1	1	
<i>Bromus laevipes</i> Shear	Woodland Brome	PG	.		Poaceae	S	1	1	
<i>Calochortus clavatus</i> S. Watson var. <i>clavatus</i>	Club-haired Mariposa Lily	PG	.		Liliaceae	C, 4,3	5	4	1
<i>Calochortus clavatus</i> ssp. <i>pallidus</i> (Hoover) Munz	Pale Yellow Mariposa Lily	PG	.		Liliaceae	U	1	1	
<i>Calystegia macrostegia</i> ssp. <i>cyclostegia</i> (House) Brummitt	Coastal Scrub Morning-glory	PV	.		Convolvulaceae	C	1		1
<i>Camissoniopsis micrantha</i> (Sprengel) W.L. Wagner & Hoch	Tiny Primrose	AH	.		Onagraceae	S	1		1
<i>Carex senta</i> Boott	Rough Sedge	PG	OBL		Cyperaceae	O	1	1	
<i>Castilleja foliolosa</i> Hook. & Arn.	Woolly Indian Paintbrush	PH	.		Orobanchaceae	O	1		1
<i>Caulanthus lasiophyllus</i> (Hooker & Arnott) Payson	California Mustard	AH	.		Brassicaceae	C	1	1	
<i>Ceanothus cuneatus</i> (Hooker) Nuttall ex Torr. & Gray var. <i>cuneatus</i>	Buck Brush, Wedgeleaf Ceanothus	S	.		Rhamnaceae	C	1	1	
<i>Ceanothus oliganthus</i> Nuttall var. <i>oliganthus</i>	Hoary Ceanothus	S	.		Rhamnaceae	C	6	3	3
<i>Ceanothus pauciflorus</i> DC.	Few-flowered Ceanothus	S	.		Rhamnaceae	C	1	1	
<i>Celtis reticulata</i> Torrey	Netleaf Hackberry	T.S	FAC		Cannabaceae	X	0	?	
<i>Centaurea benedicta</i> (L.) L. * [<i>Cnicus benedictus</i> L.]	Blessed Thistle	AH	.		Asteraceae	S	1	1	
<i>Centaurea melitensis</i> L.	Tocalote, Napa Thistle	AH	.		Asteraceae	C	1		1
<i>Chorizanthe watsonii</i> T. & G.	Watson Spineflower	AH	.		Polygonaceae	U	1	1	
<i>Chorizanthe xanti</i> S. Watson var. <i>xanti</i>	Xantus Spineflower	AH	.		Polygonaceae	S	2	2	

Vascular Plants of Middle Piru Creek by David L. Magney

Scientific Name	Common Name	Habit	Wetland Indicator		Family	Ventura Co.			
			Status			Abundance Status	# Pops.	Upper Middle	Lower Middle
<i>Cirsium vulgare</i> (Savi) Tenore *	Common or Bull Thistle	BH	FACU	Asteraceae	S	1		1	
<i>Cistus creticus</i> L. *	Rock-rose	S	.	Cistaceae	R	0	?		
<i>Clarkia cylindrica</i> (Jepson) H. Lewis & M. Lewis ssp. <i>cylindrica</i>	Cylindrical Godetia	AH	.	Onagraceae	O	1		1	
<i>Clarkia purpurea</i> ssp. <i>quadrivulnera</i> (Douglas) H. Lewis & M. Lewis	Four-spotted Purple Clarkia	AH	.	Onagraceae	C	1			1
<i>Clarkia unguiculata</i> Lindley	Elegant Farwell-to-Spring or Clarkia	AH	.	Onagraceae	C	3		1	2
<i>Claytonia perfoliata</i> Donn ex Willd. ssp. <i>perfoliata</i>	Miner's Lettuce	AH	FAC	Montiaceae	C	1			1
<i>Clematis ligusticifolia</i> Nuttall	Virgin's Bower, Old Man's Beard	PV	FAC	Ranunculaceae	C	1		1	
<i>Corethrogyne filaginifolia</i> (Hook. & Arn.) Nutt. var. <i>filaginifolia</i>	California Cudweed-aster	PH	.	Asteraceae	C	3		2	1
<i>Croton californicus</i> Muell. Arg. var. <i>californicus</i>	California Croton	PH	.	Euphorbiaceae	O	1		1	
<i>Cryptantha decipiens</i> (M.E. Jones) A.A.Heller	Gravel Forget-Me-Not	AH	.	Boraginaceae	O	1		1	
<i>Cryptantha nevadensis</i> A. Nelson & Kennedy var. <i>nevadensis</i>	Nevada Forget-Me-Not	AH	.	Boraginaceae	S	1		1	
<i>Cucurbita foetidissima</i> Kunth	Calabazilla	PV	.	Cucurbitaceae	O	1			1
<i>Deinandra fasciculata</i> (DC.) E. Greene	Fasciculed Tarplant	AH	FACU	Asteraceae	C	1		1	
<i>Delphinium parryi</i> A. Gary ssp. <i>parryi</i>	Parry Larkspur	PH	.	Ranunculaceae	C	1		1	
<i>Diplacus australis</i> (Munz) Tulig	Southern Mountain Bush Monkeyflower	S	.	Phrymaceae	U	2			2
<i>Diplacus calycinus</i> Eastw.	Fuzzy Bush Monkeyflower	S	.	Phrymaceae	C	1		1	
<i>Diplacus fremontii</i> (Benth.) Nesom var. <i>fremontii</i>	Fremont Monkeyflower	AH	.	Phrymaceae	S	1			1
<i>Diplacus longiflorus</i> (Nuttall) A. Grant var. <i>longiflorus</i>	Sticky Bush Monkeyflower	S	FACU	Phrymaceae	C	2		1	1
<i>Dipterostemon capitatus</i> (Bentham) Rydb. ssp. <i>capitatus</i>	Blue Dicks	PG	FACU	Themidaceae	C	3		1	2
<i>Distichlis spicata</i> (L.) E. Greene	Saltgrass	PG	FAC	Poaceae	C	2		1	1
<i>Dudleya cymosa</i> ssp. <i>pumila</i> (Rose) K. Nakai	Santa Monica Mtns. Live-forever	PH	.	Crassulaceae	U	2		1	1
<i>Dudleya lanceolata</i> (Nuttall) Britton & Rose	Lanceleaf Live-forever, Rock Lettuce	PH	.	Crassulaceae	C	1		1	?
<i>Dudleya pulverulenta</i> (Nuttall) Britton	Chalky Live-forever	PH	.	Crassulaceae	O	1			1
<i>Eleocharis parishii</i> Britt.	Parish Spikerush	PG	FACW	Cyperaceae	C	2		2	
<i>Elymus condensatus</i> J. Presl	Giant Wildrye	PG	FACU	Poaceae	C	3			3
<i>Elymus elymoides</i> (Raf.) Swezey ssp. <i>elymoides</i>	Bottlebrush Squirreltail	PG	FACU	Poaceae	C	3		3	
<i>Elymus glaucus</i> Buckl. ssp. <i>glaucus</i>	Blue or Woodland Wildrye	PG	FACU	Poaceae	C	2		2	
<i>Emmenanthe penduliflora</i> Bentham var. <i>penduliflora</i>	Whispering Bells	AH	.	Hydrophyllaceae	C	1		1	
<i>Epilobium canum</i> (Greene) Raven ssp. <i>canum</i>	California Fuchsia	PH	.	Onagraceae	C	2		1	1
<i>Epilobium ciliatum</i> Raf. ssp. <i>ciliatum</i>	Northern Willow-herb	AH	FACW	Onagraceae	C	1		1	
<i>Epipactis gigantea</i> Hook.	Stream Orchid	PH	OBL	Orchidaceae	O	1		1	
<i>Eragrostis superba</i> Peyr. *	Wilman Lovegrass	PG	.	Poaceae	R	1			1
<i>Eremothera boothii</i> ssp. <i>decorticans</i> (Hooker & Arnott) W.L. Wagner & Hoch	Booth Shreading Primrose	AH	.	Onagraceae	C	1		1	
<i>Eriastrum sapphirinum</i> (Eastwood) H. Mason ssp. <i>sapphirinum</i>	Sapphire Woolly Star	AH	.	Polemoniaceae	S	2			2
<i>Ericameria cuneata</i> (Gray) McClatchie var. <i>cuneata</i>	Wedgeleaf Goldenbush	S	.	Asteraceae	S	1		1	
<i>Ericameria linearifolia</i> (DC.) Urb. & Wussow	Interior Goldenbush, Stenotopsis	S	.	Asteraceae	C	1		1	
<i>Erigeron foliosus</i> Nuttall var. <i>foliosus</i>	Leafy Fleabane or Daisy	PH	.	Asteraceae	C	2		1	1
<i>Eriodictyon crassifolium</i> var. <i>nigrescens</i> Brand	Thickleaf Yerba Santa	S	.	Namaceae	C	1		1	
<i>Eriogonum elongatum</i> Bentham var. <i>elongatum</i>	Long-stemmed Buckwheat	PH	.	Polygonaceae	C	2		2	
<i>Eriogonum fasciculatum</i> var. <i>foliosum</i> (Nuttall) Abrams	Leafy California Buckwheat	S	.	Polygonaceae	C	3		3	
<i>Eriogonum fasciculatum</i> var. <i>polifolium</i> (A. DC.) Torrey & A. Gray	Hoary California Buckwheat	S	.	Polygonaceae	C	2			2
<i>Eriogonum gracile</i> Bentham var. <i>gracile</i>	Slender Woolly Buckwheat	AH	.	Polygonaceae	O	1		1	
<i>Eriophyllum confertiflorum</i> (DC.) A. Gray var. <i>confertiflorum</i>	Golden Yarrow	PH	.	Asteraceae	C	1		1	
<i>Erodium moschatum</i> (Burm. F.) L'Her. var. <i>moschatum</i> *	Whitestem Filaree	AH	.	Geraniaceae	O	1		1	
<i>Erythranthe guttata</i> (Fischer ex DC.) Nesom [<i>Mimulus guttatus</i> DC.]	Common Streamside Monkeyflower	A/PH	OBL	Phrymaceae	C	1		1	
<i>Eschscholzia minutiflora</i> S. Watson	Tiny-flowered Poppy	AH	.	Papaveraceae	U	1		1	

Vascular Plants of Middle Piru Creek by David L. Magney

Scientific Name	Common Name	Habit	Wetland Indicator		Family	Ventura Co.			
			Status			Abundance Status	# Pops.	Upper Middle	Lower Middle
<i>Eucrypta chrysanthemifolia</i> (Benth.) Greene var. <i>chrysanthemifolia</i>	Eucrypta	AH	.		Hydrophyllaceae	C	2	1	1
<i>Euthamia occidentalis</i> Nuttall	Western Goldenrod	PH	FACW		Asteraceae	O	1	1	
<i>Frangula californica</i> ssp. <i>tomentella</i> (Benth.) Kartesz & Gandhi	Hoary Coffeeberry	S	.		Rhamnaceae	C	1	1	
<i>Galium angustifolium</i> Nuttall ssp. <i>angustifolium</i>	Chaparral or Narrow-leaved Bedstraw	S	.		Rubiaceae	C	3	1	2
<i>Galium aparine</i> L.	Goose Grass, Catchseed Bedstraw	AH	FACU		Rubiaceae	C	1		1
<i>Garrya flavescens</i> S. Watson ssp. <i>flavescens</i>	Silk-tassel Bush	S	.		Garryaceae	O	1	1	
<i>Garrya veatchii</i> Kellogg	Veatch's Silk-tassel Bush	S	.		Garryaceae	C	1	1	
<i>Gilia brecciarum</i> M.E. Jones ssp. <i>brecciarum</i>	Breccia Gilia	AH	.		Polemoniaceae	O	1	1	
<i>Gilia capitata</i> ssp. <i>abrotanifolia</i> (E. Greene) V. Grant	Blue Field Gilia	AH	.		Polemoniaceae	C	2	2	
<i>Glycyrrhiza lepidota</i> (Nutt.) Pursh	American Licorice	PH	FAC		Fabaceae	S	2	1	1
<i>Greenocharis circumsissa</i> (Hook. & Arn.) Ryd. var. <i>circumsissa</i>	Greenocharis	AH	.		Boraginaceae	C	1	1	
<i>Gutierrezia sarothrae</i> (Pursh) Britton & Rusby	Broom Snakeweed, Matchweed	S	.		Asteraceae	S	1		1
<i>Hazardia squarrosa</i> (Hooker & Arnold) E. Greene var. <i>squarrosa</i>	Sawtooth Goldenbush	S	.		Asteraceae	O	1		1
<i>Heliotropium curassavicum</i> var. <i>oculatum</i> (A. Heller) Tidestr.	Alkali Heliotrope, Chinese Pusley	PH	FACU		Heliotropiaceae	C	2		2
<i>Hesperoyucca whipplei</i> Torrey ssp. <i>whipplei</i>	Our Lord's Candle	S	.		Agavaceae	C	1		1
<i>Heteromeles arbutifolia</i> (Lindley) Roemer	Toyon, Christmas Holly, Hollywood	S	.		Rosaceae	C	1	1	
<i>Hirschfeldia incana</i> (L.) Lagr.-Fossat *	Summer Mustard	PH	(FACU)		Brassicaceae	C	1	1	
<i>Holodiscus discolor</i> var. <i>macrophyllus</i> (Rydb.) Jeps.	Rock Spiraea	S	FACU		Rosaceae	R	1	1	
<i>Juglans californica</i> S. Watson	Southern California Black Walnut	T	FACU		Juglandaceae	C, 4,2	3	3	
<i>Juncus balticus</i> Willd. ssp. <i>balticus</i>	Baltic Rush	PG	FACW		Juncaceae	O	1	1	
<i>Juncus bufonius</i> L. var. <i>bufonius</i>	Common Toad Rush	AG	FACW		Juncaceae	O	1	1	
<i>Juncus xiphioides</i> E. Meyer	Iris-leaved Rush	PG	OBL		Juncaceae	C	2		2
<i>Keckiella breviflora</i> (Lindley) I.M. Johnston var. <i>breviflora</i>	Stubflower Penstemon	S	.		Plantaginaceae	C	2		2
<i>Keckiella cordifolia</i> (Benth.) I.M. Johnston	Heart-leaved Bush Penstemon	S	.		Plantaginaceae	C	3		3
<i>Lastarriaea coriacea</i> (Goodman) Hoover	Lastarriaea	AH	.		Polygonaceae	U	1	1	
<i>Lathyrus vestitus</i> ssp. <i>laevicarpus</i> Broich	Naked-pod Pacific Peavine	PV	.		Fabaceae	S	1		1
<i>Lemna minuta</i> Kunth	Tiny Duckweed	AG	OBL		Araceae	S	1		1
<i>Lepidium nitidum</i> Torrey & A. Gray	Common Peppergrass	AH	FAC		Brassicaceae	C	1		1
<i>Lepidium virginicum</i> var. <i>menziesii</i> (de Candolle) Thell.	Hairy Poorman's Peppergrass	AH	FACU		Brassicaceae	U	1		1
<i>Leptosiphon liniflorus</i> (Benth.) J.M. Porter & L.A. Johnson	Linanthus	AH	.		Polemoniaceae	O	1	1	
<i>Leptosyne calliopsidea</i> (DC.) A.Gray	Leafy-stemmed Coreopsis	AH	.		Asteraceae	U	1	1	
<i>Linanthus californicus</i> (Hook. & Arn.) J.M. Porter & L.A. Johnson	Prickly Phlox	S	.		Polemoniaceae	C	1	1	
<i>Lonicera interrupta</i> Benth.	Chaparral Honeysuckle	S	.		Caprifoliaceae	S	1	1	
<i>Lupinus hirsutissimus</i> Bentham	Nettle or Stinging Lupine	AH	.		Fabaceae	C	2	2	
<i>Lupinus microcarpus</i> var. <i>densiflorus</i> (Benth) Jeps.	Densely Red-flowered Lupine	AH	.		Fabaceae	S	1	1	
<i>Lupinus sparsiflorus</i> Benth. ssp. <i>sparsiflorus</i>	Few-flowered or Loose-flowered Lupine	AH	.		Fabaceae	C	1	1	
<i>Lupinus truncatus</i> Nuttall	Truncate-leaved Lupine	AH	.		Fabaceae	C	1	1	
<i>Malacothamnus fasciculatus</i> (Nutt.ex T.& G.) Greene var. <i>fasciculatus</i>	Chaparral Bushmallow	S	.		Malvaceae	C	1	1	
<i>Malacothamnus fasciculatus</i> var. <i>laxiflorus</i> (Gray) Kearney	Lax-flowered Bushmallow	S	.		Malvaceae	R	1	1	
<i>Malacothamnus fasciculatus</i> var. <i>nuttallii</i> (Abrams) Kearney	Nuttall Bushmallow	S	.		Malvaceae	O	1	1	
<i>Malacothrix saxatilis</i> var. <i>tenuifolia</i> (Nutt.) Gray	Tenuated Cliff-aster	PH	.		Asteraceae	C	2	2	
<i>Marah fabacea</i> (Naudin) Greene	California Man-root	PV	.		Cucurbitaceae	C	1		1
<i>Marah macrocarpa</i> (Greene) Greene var. <i>macrocarpa</i>	Large-fruited Man-root, Chilicothe	PV	.		Cucurbitaceae	O	1		1
<i>Marrubium vulgare</i> L. *	White Horehound	S	FACU		Lamiaceae	C	2	2	
<i>Medicago polymorpha</i> L. *	Common Burclover	AH	FACU		Fabaceae	C	1	1	
<i>Melica imperfecta</i> Trin.	Coast Melic Grass	PG	.		Poaceae	C	1		1

Vascular Plants of Middle Piru Creek by David L. Magney

Scientific Name	Common Name	Habit	Wetland Indicator		Family	Ventura Co.			
			Status			Abundance Status	# Pops.	Upper Middle	Lower Middle
<i>Mentzelia veatchiana</i> Kellogg	Veatch Stickleaf	AH	.		Loasaceae	C	1	1	
<i>Mirabilis laevis</i> var. <i>crassifolia</i> A. Gray (Choisy) Spellenberg	California Wishbone Bush	PH	.		Nyctaginaceae	C	1		1
<i>Muilla maritima</i> (Torrey) S. Watson	Common Muilla	PG	.		Themidaceae	O	1	1	
<i>Myriopteris</i> [<i>Cheilanthes</i>] <i>covillei</i> (Maxon) A. Löve & D. Löve	Coville Lip-fern	PF	.		Pteridaceae	C	1	1	
<i>Nasturtium officinale</i> R. Br.	Water Cress	PH	OBL		Brassicaceae	C	2		2
<i>Navarretia hamata</i> E. Greene ssp. <i>hamata</i>	Skunk Navarretia	AH	.		Polemoniaceae	S	1	1	
<i>Nemophila menziesii</i> var. <i>integrifolia</i> Parish	Baby Blue-eyes	AH	.		Hydrophyllaceae	U	1	1	
<i>Oenothera biennis</i> L. *	Common Evening-primrose	BH	FACU		Onagraceae	R	1	1	
<i>Olea europaea</i> L. *	European Olive	T	.		Oleaceae	S	1		1
<i>Oloptum miliaceum</i> (L.) Roser & Hamasha *	Smilo Grass	PG	(FACU)		Poaceae	C	4		4
<i>Parietaria pensylvanica</i> Muhlenberg ex Willdenow	Pennsylvania Pellitory	AH	FACU		Urticaceae	R	1	1	
<i>Pentagramma triangularis</i> (Kaulf.) Yatskievych et al. ssp. <i>triangularis</i>	Goldenback Fern	PF	.		Pteridaceae	C	2		2
<i>Peritoma arborea</i> var. <i>globosa</i> (Coville) H.H. Iltis	Bladderpod	S	.		Cleomaceae	S	1	1	
<i>Phacelia affinis</i> Gray var. <i>affinis</i>	Limestone Phacelia	AH	.		Hydrophyllaceae	S	1	1	
<i>Phacelia cryptantha</i> E. Greene	Forget-Me-Not Phacelia	AH	.		Hydrophyllaceae	R	1	1	
<i>Phacelia distans</i> Benth.	Wild Heliotrope	AH	OBL		Hydrophyllaceae	C	1		1
<i>Phacelia ramosissima</i> Lehm. var. <i>ramosissima</i>	Branching Phacelia	PH	FACU		Hydrophyllaceae	C	1		1
<i>Phacelia viscida</i> (Bentham) Torrey var. <i>viscida</i>	Viscid Phacelia	AH	.		Hydrophyllaceae	C	1		1
<i>Pholistoma auritum</i> (Lindley) Lilja var. <i>auritum</i>	Blue Fiesta Flower	AH	.		Hydrophyllaceae	C	2		2
<i>Phoradendron leucarpum</i> ssp. <i>tomentosum</i> (DC.) J.R. Abbott & R.L. Thomps.	Oak or Hairy Mistletoe	PH	.		Viscaceae	C	1	1	
<i>Pinus sabiniana</i> Douglas	Foothill or Gray Pine	T	.		Pinaceae	R	1		1
<i>Plagiobothrys arizonicus</i> (Gray) Gray	Arizona Popcornflower	AH	.		Boraginaceae	U	1	1	
<i>Plagiobothrys collinus</i> var. <i>fulvescens</i> (I.M. Johnston) Higgins	Popcornflower	AH	.		Boraginaceae	U	1		1
<i>Plantago patagonica</i> Jacq.	Patagonia Plantain	AH	.		Plantaginaceae	R	2	2	
<i>Platanus racemosa</i> Nuttall var. <i>racemosa</i>	California or Western Sycamore	T	FACU		Platanaceae	C	2	2	
<i>Polypodium californicum</i> Kaulfuss	California Polypody	PF	.		Polypodiaceae	C	2		2
<i>Prunus ilicifolia</i> (Nutt.) Walp. ssp. <i>ilicifolia</i>	Hollyleaf Cherry	S	.		Rosaceae	C	2	2	
<i>Pseudotsuga macrocarpa</i> (Vasey) Mayr	Bigcone Spruce or False Hemlock	T	.		Pinaceae	C	1	1	
<i>Quercus agrifolia</i> Nee var. <i>agrifolia</i>	Coast Live Oak	T	(FACU)		Fagaceae	C	4	4	
<i>Quercus douglasii</i> H. & A.	Blue Oak	T	.		Fagaceae	R	1	1	
<i>Rhinotropis cornuta</i> var. <i>fishiae</i> (C. Parry) J.R. Abbott	Fish's Milkwort	S	(FAC)		Polygalaceae	C, 4,3	2		2
<i>Rhus trilobata</i> var. <i>malacophylla</i> (E. Greene) Jepson	Woolly Skunkbrush	S	FACU		Anacardiaceae	S	1	1	
<i>Ribes quercetorum</i> Greene	Oak Gooseberry	S	.		Grossulariaceae	S	1	1	
<i>Rosa californica</i> Cham. & Schltld.	California Wild Rose	S	FAC		Rosaceae	C	2	2	
<i>Rumex salicifolius</i> J.A. Weinm. [var. <i>salicifolius</i>]	Willow Dock	PH	FACW		Polygonaceae	C	1	1	
<i>Sabulina douglasii</i> (Fenzl ex T. & G.) Dellenb.& Kabereit	Douglas Sandwort	AH	.		Caryophyllaceae	C	2	1	1
<i>Salix laevigata</i> Bebb.	Red Willow	T	FACW		Salicaceae	C	2	1	1
<i>Salix lasiolepis</i> Benth. var. <i>lasiolepis</i>	Arroyo Willow	T	FACW		Salicaceae	C	2	2	
<i>Salvia apiana</i> Jepson var. <i>apiana</i>	White Sage	S	.		Lamiaceae	C	2	2	
<i>Salvia dorrii</i> var. <i>pilosa</i> (Gray) Strachan & Reveal	Pilose Desert Sage	S	.		Lamiaceae	R	1	1	
<i>Salvia leucophylla</i> Greene	Purple Sage	S	.		Lamiaceae	C	1	1	
<i>Schoenoplectus pungens</i> var. <i>badius</i> (J. Presl & C. Presl) S.G. Smith	Common Threesquare	PG	OBL		Cyperaceae	U	1		1
<i>Selaginella bigelovii</i> Underwood	Bigelow Spike-moss	PF	.		Selaginellaceae	C	2	2	
<i>Stephanomeria pauciflora</i> (Nutt.) Nelson var. <i>pauciflora</i>	Wire-lettuce	PH	.		Asteraceae	S	1	1	
<i>Stipa coronata</i> Thurber	Giant Needlegrass	PG	.		Poaceae	C	1	1	
<i>Stuckenia pectinata</i> (L.) Börner	Fennel-leaf Pondweed	PH	OBL		Potamogetonaceae	U	1		1

Vascular Plants of Middle Piru Creek by David L. Magney

Scientific Name	Common Name	Habit	Wetland Indicator		Family	Ventura Co.			
			Status			Abundance Status	# Pops.	Upper Middle	Lower Middle
<i>Symphoricarpos mollis</i> Nuttall	Creeping or Trailing Snowberry	S	FACU	.	Caprifoliaceae	C	1		1
<i>Tamarix ramosissima</i> Ledeb. *	Tamarisk	T/S	(FACW)	.	Tamaricaceae	O	1		1
<i>Tauschia arguta</i> (Torrey & Gray) J.F. Macbr.	Southern Tauschia	PH	.	.	Apiaceae	O	1	1	
<i>Toxicodendron diversilobum</i> (T. & G.) Greene	Western Poison Oak	S/V	FACU	.	Anacardiaceae	C	2	2	
<i>Trichostema lanatum</i> Bentham	Woolly Bluecurls, Romero	S	.	.	Lamiaceae	C	2	2	
<i>Typha domingensis</i> Pers.	Southern Cattail	PH	OBL	.	Typhaceae	C	1		1
<i>Zannichellia palustris</i> L.	Horned-Pondweed	PG	OBL	.	Potamogetonaceae	U	1		1

Notes: Scientific nomenclature follows the Flora of North America Editorial Committee (1993-), *The Jepson Manual* (Baldwin et al. 2012), Baker et al. (2012 for Phrymaceae),

Nesom (2012a & 2012b for *Erythranthe* , 2013 for *Diplacus*), Tulig & Nesom (2012 for *Diplacus*), Hasenstab-Lehman & Simpson (2012 for *Cryptantha*),

Burge & Zhukovsky (2013 for *Ceanothus vestitus* complex), Schneider (2016 for *Aphyllon*), Colwell et al. (2017 for *Aphyllon*), and Broich (1987 for *Lathyrus vestitus*).

Most current taxomomy is followed when changed have occurred since publication of the above listed references.

Common names follow Abrams and Ferris (1960), Neihaus and Ripper (1976), and DeGarmo (1980).

An "*" indicates non-native taxa that have become naturalized or persist without cultivation.

A ? indicates taxa that are expected to occur in the County but have not been seen.

Habit definitions:

AF = annual fern or fern ally.

AG = annual grass or graminoid.

AH = annual herb.

BH = biennial herb.

PF = perennial fern or fern ally.

PG = perennial grass or graminoid.

PH = perennial herb.

PV = perennial vine.

S = shrub.

T = tree.

Wetland indicator status (Lichvar et al. 2016): OBL = obligate wetland species, occurs almost always in wetlands (>99% probability)

FACW = facultative wetland species, usually found in wetlands (67-99% probability).

FAC = facultative species, equally likely to occur in wetlands or nonwetlands (34-67% probability).

FACU = facultative upland species, usually occur in nonwetlands (67-99% probability).

A period "." indicates that no wetland indicator status has been given in Lichvar et al. (2016).

Parentheses around an indicator status indicates the wetland status as suggested by David L. Magney.

Abundance status definitions for Ventura County:

R = Rare (1-5 extant populations known)

U = Uncommon (6-10 extant populations known)

S = Scattered (11-20 extant populations known)

O = Occasional (21-30 extant populations known)

C = Common (>30 extant populations known)

X = Expected but not yet found

T = Type Locality

Special-status Species definitions:

FE = Federally listed Endangered

FT = Federally listed Threatened

SE = California listed Endangered

ST = California listed Threatened

SR = California listed Rare

FS = Forest Service Sensitive Species

CNPS/CNDDB

1A = CNPS 1A

1B.x = CNPS 1B

2.x = CNPS 2

3.x = CNPS 3

4.x = CNPS 4

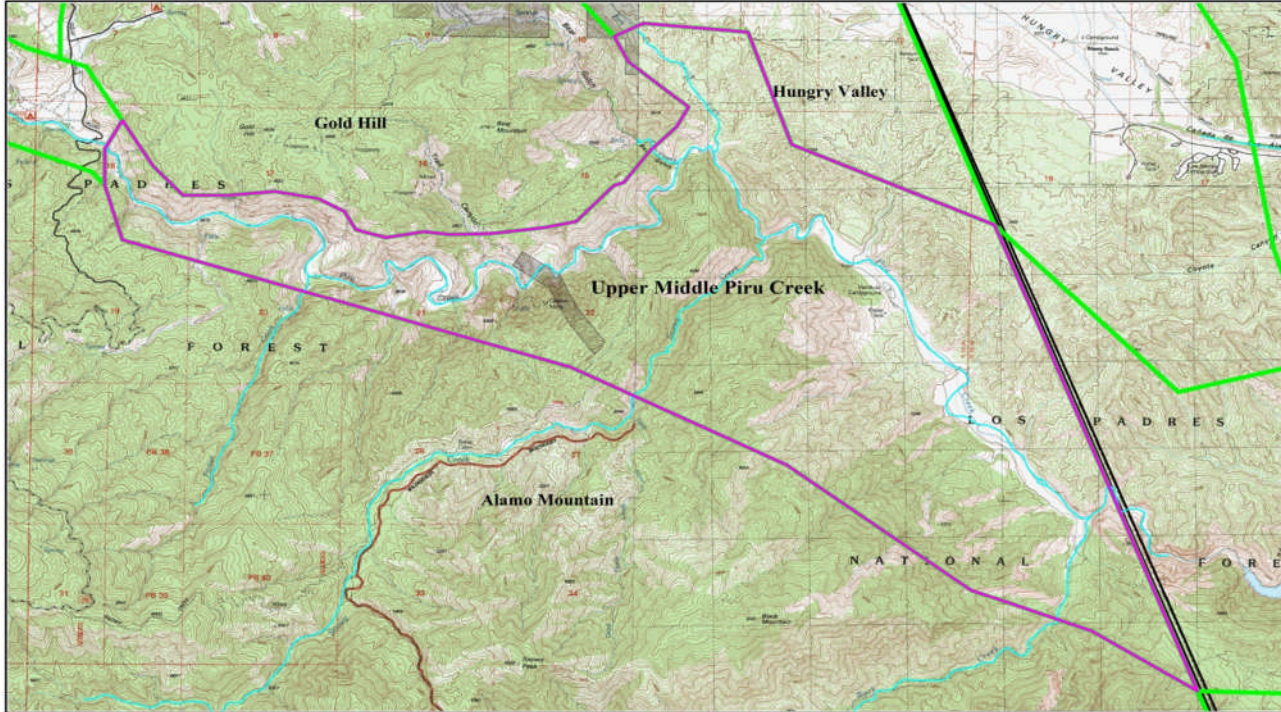
Developed by David L. Magney 2026. Checklist may be used for educational and nonprofit purposes only.

Based on voucher specimens at one or more California public herbaria and direct observations by author.

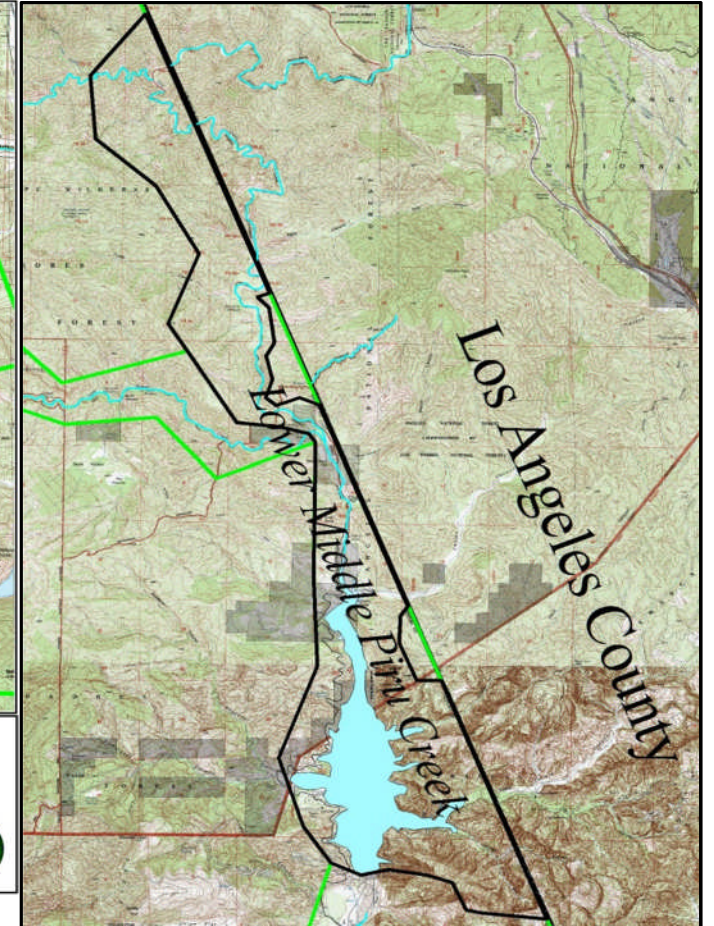
Vascular Plants of Middle Piru Creek by David L. Magney

Scientific Name	Common Name	Habit	Wetland Indicator Status	Family	Ventura Co. Abundance Status	# Pops.	Upper Middle	Lower Middle
-----------------	-------------	-------	--------------------------	--------	------------------------------	---------	--------------	--------------

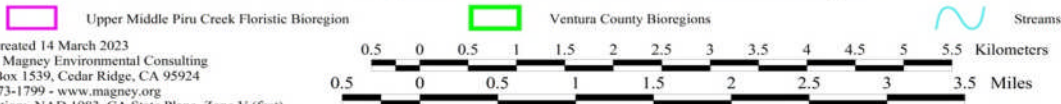
Upper Middle Piru Creek Bioregion



Lower Middle Piru Creek Bioregion



Upper Middle Piru Creek Floristic Bioregion



Map created 14 March 2023
 David Magney Environmental Consulting
 P.O. Box 1539, Cedar Ridge, CA 95924
 530-273-1799 - www.magney.org
 Projection: NAD 1983, CA State Plane, Zone V (feet)
 Base Map: Alamo Mountain, Calif. & Black Mountain, Calif. USGS 7.5-minute Quadrangles



Vascular Plants of Middle Piru Creek by David L. Magney

Scientific Name	Common Name	Habit	Wetland Indicator Status	Family	Ventura Co. Abundance Status	# Pops.	Upper Middle	Lower Middle
-----------------	-------------	-------	--------------------------------	--------	------------------------------------	------------	-----------------	-----------------
